

Newsletter

Friday 1st May



Melbourne Primary School

Grow, Explore and Achieve together

Mrs. Burdett's Weekly Update

What a wonderful week we've had at Melbourne Primary! The sunshine has brought out the very best in our school community, and I'm delighted to share some of the exciting things that have been happening.

Our new polytunnel has been a hive of activity this week. We've been busy planting strawberries, potatoes, peppers, basil and mint, and it's been brilliant to see the pupils so engaged with growing their own produce. I'd like to extend a huge thank you to Friends of School, who have been instrumental in helping to fund this fantastic project. Over the coming weeks, we'll be building up our new planters, and each class will have the opportunity to have their own and discuss what they'd like to grow in them. It's a wonderful way for our pupils to connect with nature and learn about where their food comes from. Do watch this space for updates!

We've also had some truly magical moments of awe and wonder this week. In Year 2, the pupils have been absolutely captivated watching their caterpillars grow and develop. There's something really special about witnessing nature unfold before our eyes, and it's moments like these that make learning so memorable.

On Thursday, we were fortunate to welcome a cricket coach into school. Every class had the opportunity to take part and develop different aspects of cricket. The energy and enthusiasm from our pupils was fantastic, and it was great fun for everyone involved!

Of course, no week at Melbourne Primary is complete without celebrating the wonderful achievements of our pupils. We have our 'Starry Book of Stars', where children visit my office to share pieces of work from across the curriculum that they're particularly proud of. This week, I've had the pleasure of welcoming two Year 2 pupils who have demonstrated great mathematical and writing skills. It's always a joy to recognise and celebrate these achievements with them.

Friday remains a highlight of our week, when we gather in the hall for our special celebration table. It's a lovely tradition where I eat lunch with our weekly Values winners, and it's a wonderful way to acknowledge the pupils who have been living out our school values.

As we move into the warmer season, I'd like to remind parents to please send your child with a sunhat and ensure sun cream is already applied before they come to school. This will help keep our pupils safe and comfortable during outdoor activities.

Have a great extended weekend and see you all on Tuesday!

Vicky Burdett

Headteacher

A message from the Early Years Team

As the grass grows in the new Early Years area, we are in the process of making some fun resources for the children to use.

We are short of a few items and wondered if you happen to have any of the following items that you no longer need and would be happy to donate, we would be extremely grateful.

1. Clean off-cuts of plastic guttering and pipes.
2. Off-cuts of planks of wood- between 30cm and 100cm long.
3. A camping kettle.
4. Wooden cooking utensils.
5. Balance bikes suitable for 3+years.
6. Wooden discs from a tree. (slices)
7. Logs to sit on.
8. Beech Ikea Kallax units.

Thank you for your continued support,
we can not wait to get going in our new area.



Melbourne
Primary School



Wonder
Learning Partnership
Educate | Empower | Engage | Enrich

**Nursery Places
Available From
September 2026
From Age 3 Years**

**Contact us now
for further information**

www.melbourneprimary.org.uk

Tel: 01759 318369

Email: admin@mcps.org.uk



Clubs

Breakfast Club - 7.30-8.30am - £5

ASC - 3-4pm - £5

ASC - 4-5pm - £5

Please book breakfast club and After School Club on ARBOR - if you have any issues with booking sessions, please contact the school office.

Enrichment Clubs

There will be a small charge for sessions to cover staffing and resources to keep the clubs running.

Reading at Home



Thank you to all of you who continue to engage with the digital reading log.

Your teachers should have now sent you a letter about the reading log. You will receive a link every Monday. Each child should aim to read and log 4 reading sessions a week.

Well done to those children who have achieved their target this week! We love seeing your reading progress.

Reminder to Parents

Please can we ask that children do not bring popcorn to school as a snack or part of their pack up. This is due to new government guidance on choking.

Dates for your diary

Year 4 Swimming Friday 17th April - 26th June

Bag2School 7th May

Summer Term 1 2026 (Monday 13th April 2026 – Thursday 21st May 2026)

Monday 4th May Bank holiday

Friday 22nd May 2026 - Staff Training Day (school closed)

Monday 2

Wednesday 17th June, Thursday 18th June,

Friday 19th June and Monday 22nd June

Year 5 Bike ability

Monday 22nd June - Wednesday 24th Year 6 Residential

School Disco Wednesday 15th July

Summer Term 2 2026 (Monday 1st June 2026 – Friday 17th July 2026)

Autumn Term 1 Wednesday 9th September - Friday 23rd October

Autumn Term 2 2nd November - Friday 18th December

2027

Monday 4th January - Staff training day

Spring Term 1 - Tuesday 5 January – Friday 5 February

Spring Term 2 - Monday 15 February – Friday 19 March

Monday 3rd May - Bank holiday

Summer Term 1 - Monday 5 April – Thursday 27 May

Friday 28th May - Staff training day

Summer Term 2 - Monday 7 June – Friday 23 July

Monday 26th July - Staff training day

Cygnets 91%
Swan 100%
Mallard: 98%
Otter: 96%
Dragonfly: 98%
Heron: 99%
Kingfisher: 98%
Pheasant: 98%

Attendance and Awards!

†

The value award we are focusing on this week is the 'Achieve' award. Well, done to all the children who have been selected for this award!

CYGNET AND SWAN CLASS – Maisie for challenging yourself when completing addition calculations during our maths sessions in school and at home too!

MALLARD – Lucy, for always trying her best to achieve great things in all subjects!

OTTER – Cora for all the effort she has put in to improve her handwriting and presentation of written work.

DRAGONFLY – Charlie for contributing to lessons by building and challenging others answers.

HERON – Carter for exploring his confidence in the water, developing new techniques to travel with speed.

KINGFISHER – Henry- For trying his best in everything he does but in particular in PE this week when playing cricket.

PHEASANT – Tristan- for your hard work, increasing confidence and improvement in arithmetic.

Our Readers of the week are:

CYGNET AND SWAN CLASS – William for your continued effort when trying to read and comprehend your school reading books.

MALLARD – Clemmie, for her hard work and determination in all writing sessions!

OTTER – John Patrick for his super effort and using conjunctions in our explanation topic

DRAGONFLY – Annabella for expanding your answers and providing details from the text.

HERON – Olivia C, for great discussions around the characters emotions in our model text.

KINGFISHER – Finley- For working hard in writing lessons and writing a great orientation for a newspaper report.

PHEASANT – Arthur- For your hard work, attention to detail and for seeking to improve your sentences.



Pocklington
Junior School

www.pocklingtonjuniors.co.uk

Part of the Family:



Wonder
Learning Partnership
Educate | Empower | Engage | Enrich



Class Teacher KS2

Closing: Friday 15th May 2026

M3 and above

14.3 hours per week, Fixed term (potential to extend)

Start September 2026

Interview scheduled: Thursday 21st May 2026

Be part of an engaging team

Application Form: www.wlp.education

Applications to: admin@pocklingtonjuniors.co.uk

We are hiring



Teacher KS2

M1 -M6

Closing Date: Friday 8th May 2026

Believe | Engage | Succeed | Together

Contact: office@stamfordbridgeschool.co.uk

Apply: www.wlp.education



Stamford Bridge
Primary School

www.stamfordbridgeschool.co.uk

Part of the Family:



Wonder
Learning Partnership
Educate | Empower | Engage | Enrich



SAVE THE DATE!

KIDS RUGBY SUMMER CAMP

BOYS AND GIRLS 7-14 YEARS



**22nd and 23rd July
5th and 6th August**

**Further Details
To Follow**

Pocklington Rugby Club

Percy Road, YO42 4QB

www.pocklingtonrugbyclub.co.uk



JUNIOR TOUCH RUGBY

AT POCKLINGTON RUGBY CLUB

WEDNESDAY NIGHTS STARTING 13TH MAY



BOYS 7-12 YEARS
— 6PM - 7PM —

GIRLS 7-12 YEARS
— 6PM - 7PM —

BOYS 13-16 YEARS
— 7PM - 8PM —

GIRLS 13-16 YEARS
— 7PM - 8PM —

FREE!

CONTACT: Mjchair@pockrufc.org
— 07748 908 800 —

POCKLINGTON RUGBY CLUB

PERCY ROAD, YO42 4QB

www.pocklingtonrugbyclub.co.uk

Good attendance means...

Being in school at least 95% of the time.

365

190

175
activities

Grow, Explore & Achieve Together



You're a star!

100%

0 days absence

95%

10 days absence



We are worried

90%

19 days absence

85%

29 days absence



We are really concerned

80%

152 days absence

75%

143 days absence



Melbourne
Primary School

www.melbourneprimary.org.uk

Part of the Family:



Wonder
Learning Partnership
Educate | Empower | Engage | Enrich

Good time keeping means...

making sure your child is at school and ready to learn, before the school bell rings.



**Lost
Minutes**



**Lost
Learning**

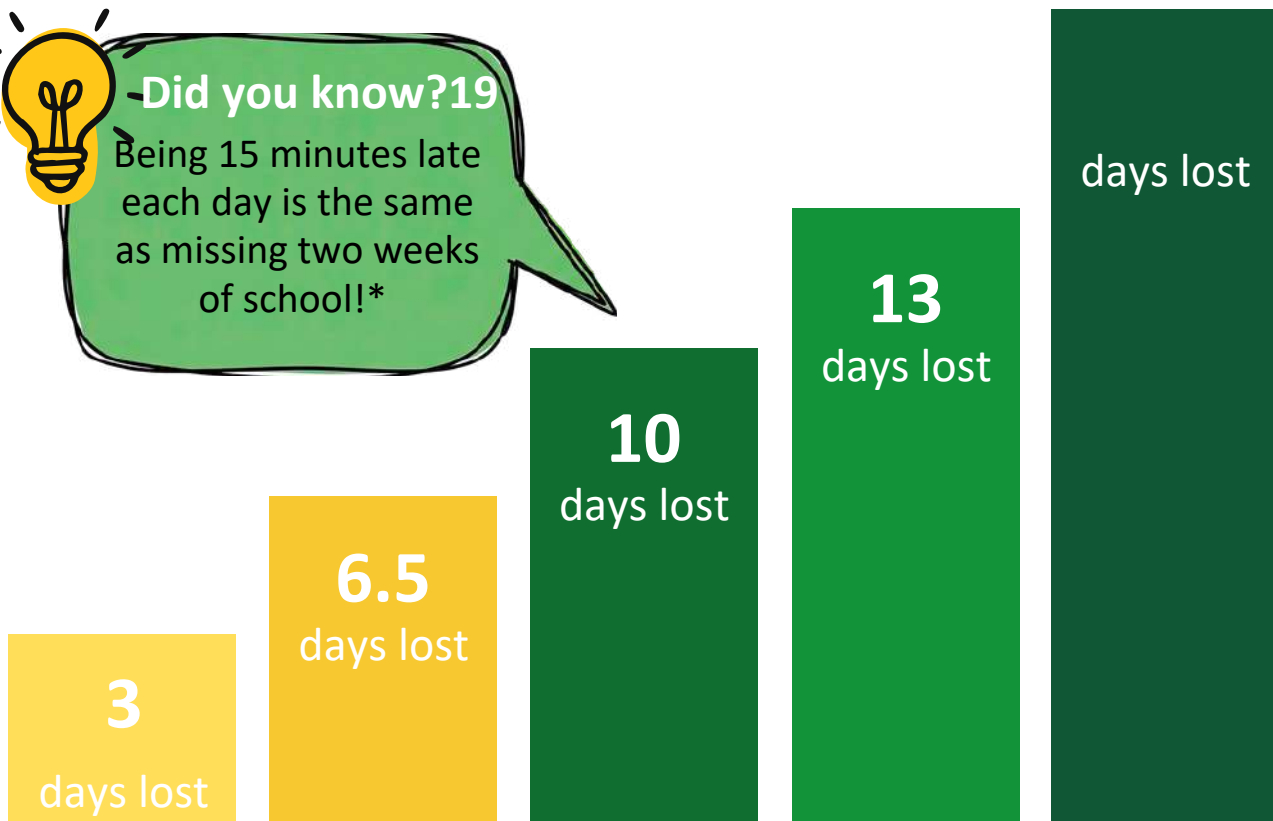


Grow, Explore & Achieve Together



Did you know? 19

Being 15 minutes late each day is the same as missing two weeks of school!*



**Every School Day Counts
but every minute is important**

*over one full academic year



Melbourne
Primary School

www.melbourneprimary.org.uk

Part of the Family:



Wonder
Learning Partnership
Educate | Empower | Engage | Enrich



Save the environment whilst saving money and supporting Friends of Melbourne School.



Friends of Melbourne School now has an on-line second hand school uniform shop on the platform Uniformd. Please head along and have a look.

It's easy to see what we have in stock, and simple to place an order. Most of the items are listed with a zero price tag, so you are free to make a donation to Friends of School and receive the items of school uniform in return. Garments will be sent home from school with your child within seven days of you placing the order.

We have to pay an admin charge per transaction for us to use the platform, so we kindly ask that you make a minimum donation of £2 per item, and if possible, purchase more than one item at a time. If you are a uk tax payer, please tick the relevant box on the order form, and we will be able to claim gift aid on your donation.

Our stock list will be updated regularly, so if you don't see what you are looking for, please look again in a few days, or send us an enquiry using the "contact us" button on our page on the website.

Please pop along and have a look:

<https://app.uniformd.co.uk/items/melbourne-primary-school>



BAG 2 SCHOOL

FREE FUNDRAISING FOR SCHOOLS

In partnership with your school or organisation



www.bag2school.com

Melbourne Primary School



Bag 2 School is a company that specialises in the reuse and recycling of good quality second-hand clothing and we have arranged to make a collection from your school. All the bags will be weighed and you will be paid for the total weight collected. Remember, the more you collect the greater the benefit to your school.



PLEASE USE YOUR OWN BAGS (THERE IS NO LIMIT).

When the clothes have been removed from the bag the plastic will be packed and sent for recycling.

We are collecting good quality items for RE-USE:

Men's, ladies' & children's clothing, paired shoes, handbags, belts & accessories.

(No uniforms, workwear, pillows, duvets or pieces of fabric please)

The more we weigh the more we pay!

Extra bags are welcome - there's no limit

Please return your Bag 2 School on:

Thursday 7 May 2026 by 9:00am



01609 780 222



www.bag2school.com



helpdesk@bag2school.com



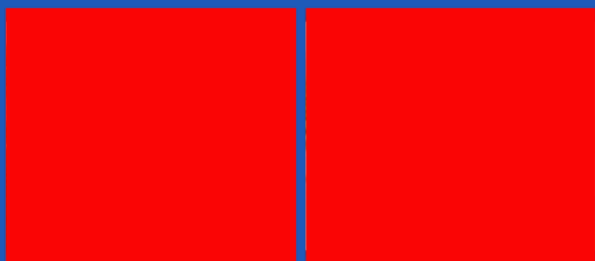
FOR CHILDREN IN RECEPTION – YEAR 8

THE ULTIMATE HOLIDAY CLUB EXPERIENCE

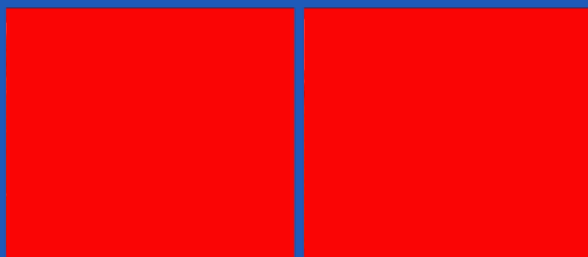
ANEWCHOICEEVERYHOUR - YOURDAY, YOURCHOICE !

TOTAL SPORTS - TOTAL ENERGY

THIS or THAT ?



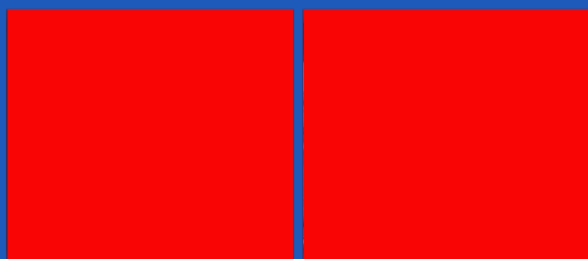
WATER PISTOLS OR ARTS & CRAFTS ?



FOOTBALL OR ARCHERY ?



INFLATABLES OR DODGEBALL ?



PARACHUTE OR SWIMMING ?

POCKLINGTON :

POCKLINGTON SCHOOL

50+ Total Energy Activities Every Week
2 Choices Every Hour - Active & Creative Options

SAVE 10% - EARLY BOOKING OFFER

Price already applied online

(Offer ends 3 weeks before camp starts)

*

www.totalsportslimited.co.uk



YORK KEY INFORMATION

DAILY TIMES	Book individual days or full weeks
Early Drop-Off	8:00–8:45
Standard Day	8:45–4:00
Extended Day	4:00–5:00
Super Extended	4:00–5:30

Open
Daily
08:00 -
5:30pm

Flexible Drop-Off Window: 8:45–9:15

Children may arrive anytime within this window.

POCKLINGTON SCHOOL

A lovely nurturing venue, with lots of space indoors and out.

SWIMMING POOL ! Every TUESDAY & THURSDAY !

A POPULAR VENUE THAT IS USUALLY FULL.

POPULAR WITH AGES 5 - 8 particularly, but all ages.

Limited spaces - please book early as we get FULL Monday to Thursday.

A SPECIAL EXTRA “WOW” EVERY WEEK

 BouncyCastle |  Inflatable Assault Course |  Nerf Battles |  Silent Disco |  Archery |  Football Darts |  Water Park

Check online for “wow” whereabouts

TRUST & BOOKING

Ofsted Registered | Accepting Childcare Vouchers

Tax-Free Childcare Accepted

Flexible Booking Options - Book Individual Days or Full Weeks

BOOK ONLINE / INFO

www.totalsportslimited.co.uk

FreezeNova (Unblocked games)

FreezeNova unblocked is a website that is free to access and contains a wide variety of games, including shooting, multiplayer and racing games. This site may bypass usual filters, making it easier for your child to access games that you may not want them to play. As there are a variety of games, not all games may be suitable for your child.

There is also FreezeNova Chat, allowing users to chat to their friends and meet new ones. Clearly there are concerns with any online chat facility as there is the potential to view inappropriate content, risk of bullying as well as grooming.

We could not locate any age ratings on this site and there are constant adverts. Childnet have a webpage providing advice on gaming and chat features here:

<https://www.childnet.com/help-and-advice/gaming/>

Would you like to read this newsletter in a different language? You can use the translate tool on our web version: <https://www.knowsleycitycs.org.uk/may-2026-primary/>

Group Chats

Is your child part of any group chats? This could be on social media, for example on WhatsApp or within games such as Fortnite. If so, it is important that you are aware of the potential risks, which include:

Inappropriate content—there is often a lack of moderation within chat facilities so users could be exposed to content/language that is not suitable for their age.

Bullying—there are many instances where inappropriate/hurtful comments are shared within groups, this could take the form of name calling or body shaming. Bullying can also be in the form of excluding others from the group. These issues often overflow into 'real life'.

Strangers—your child could be added to groups with people they do not know or even with someone that they have previously blocked.

Conversations can be shared/screenshot—make sure your child is aware that anything they share within a group can be shared with others.

Sharing personal information—remind your child to be aware of the information they share with others, including images and location.

How can I help make group chats safer?

- Check the recommended age rating and adhere to them.
- Set up age-appropriate parental controls, suitable privacy settings and set screen time limits.
- On WhatsApp you can do a privacy check, by going to settings, privacy and privacy checkup.
- Show your child how to use any reporting and blocking tools.

What else can I do?

It is crucial to have regular conversations with your child about the risks outlined above and about what they are doing online.

Talk about who they are chatting with, encourage them to think carefully about what they send and how it could be perceived by others.

Talk about positivity and not saying anything hurtful. Ask them to think about whether they would say what they are messaging, face to face.

Devices should be used in family rooms so you can monitor what they are doing and who they are interacting with.

Finally, make sure to model good digital behaviour yourself, as children often learn by observing the adults around them.

Further information

<https://www.nspcc.org.uk/keeping-children-safe/online-safety/social-media/chat-apps/>



Roblox - update

What is Roblox?

Roblox is a platform consisting of a collection of games. Players can either create games or play games that other users have created. **As a lot of the content is user generated, not all games will be suitable for your child to view/play.** If your child is playing Roblox, **it is important to monitor**



what your child is accessing as well as set up appropriate parental controls. PEGI rate Roblox with a Parental Guidance recommended label, this is because it is a platform of individual, user generated games.

New Age-Based Accounts

From next month, Roblox will introduce two new age-based accounts: Roblox Kids for users ages 5 to 8 and Roblox Select for users ages 9 to 15. Roblox Kids Accounts (ages 5–8) will be limited to games with a 'Minimal or Mild' content maturity label and all communication is disabled by default. Roblox Select accounts (ages 9 to 15) will be limited to games with content maturity labels up to and including 'Moderate'. By default, Experience Chat is ON and Direct Experience Chat is OFF. The differences in chat are outlined here: <https://about.roblox.com/safety-by-age>

Parental Controls

As part of parental controls, you can manage content ratings, communication, screen-time, and spending limits as well as see which games your child is playing on and who their friends are. Roblox are extending these controls to allow you to:

- Blockspecificindividualgames(toage15).
- Managedirectchatsettings(toage15).
- Approveaccesstospecificgames.

It is important to regularly monitor what your child is playing on Roblox and who they are interacting with, even if you have parental controls set up. You can find out more about the new accounts and parental controls here:

<https://about.roblox.com/newsroom/2026/04/introducing-roblox-kids-and-select-accounts>

Further information

<https://swgfl.org.uk/magazine/roblox-releases-updated-parental-controls-and-age-appropriate-experiences/>

Users of this guide do so at their own discretion. No liability is entered into. Current as of the date released 01.05.26. The inclusion of any links does not imply any affiliation with or endorsement of the linked websites, documents, or videos, nor are we claiming any ownership or copyright in the content of the linked materials.

Screen time guidance for under 5s

The Government now advise limiting screen time for young children. They advise avoiding screen time for under 2 years and to try to keep it to less than 1 hour a day for 2-5 years. Best Start for Life have published an article outlining what content is better, how your own screentime affects your child and how screentime can affect your child's development. Find out more here:

<https://beststartinlife.gov.uk/screen-time-under-5s/>

Do you know what 'looksmaxxing' is?

It is the idea of improving and maximising your looks. Internet Matters have published this article, which provides more information on this topic and outlines the risks (including links to the manosphere):

<https://www.internetmatters.org/hub/news-blogs/what-is-looksmaxxing-online-safety-guidance-for-parents/>

PEGI is expanding their age ratings

From June, PEGI is adding new categories. "Newly submitted games will be classified with a broader set of criteria that will focus on content and functionality, such as purchases of in-game content, paid random items, communication features, and features that incentivise players to continue playing." Find out more here:

<https://pegi.info/news/pegi-expands-age-rating-criteria-interactive-risk-categories>



Wonder
Learning Partnership
Educate | Empower | Engage | Enrich

One Family

We are part of a wider family of schools in the Wonder Learning Partnership. The Trust is passionate about working in partnership to provide the best education for our children along with ensuring colleagues are supported in career development.

Our Trust is child centered, driven by an absolute desire, to know and care for each child as an individual. To nurture their individual talents and to create within them a love of learning. Exposing them to the true majesty, awe and wonder of creation. We take pride in:

- Recognising locality, rurality, community.
- Respecting the foundation, history and identity of each school.
- Ensuring every child can attend an exceptional local school.
- Providing every school who shares our mission a choice and home.
- Serving the greater good, the needs of others and our vocation as Servant Leaders.
- Being an advocate for those who we serve.

Learn more about our Trust: www.wlp.education

Educate

We are committed to educating the whole child and believe every child should reach their potential.



Empower

We will empower our whole school community through support, development and value in the pursuit of excellence.



Engage

We will engage in best practice to develop the personal qualities and aspirations of pupils and staff.



Enrich

We will ensure our children are exposed to a wealth of experiences and opportunities.

