

# Newsletter

Friday 17<sup>th</sup> April



## Melbourne Primary School

Grow, Explore and Achieve together

### Mrs. Burdett's Weekly Update

What a fabulous first week back we've had at Melbourne Primary! It's been wonderful to see the children settle so quickly back into the school routine. There's something special about that return after the holidays – the energy, the enthusiasm, and that sense of reconnection with their learning spaces and their friends. Thank you so much to all of you who joined us for our writing open morning. We hope you enjoyed being involved in your children's writing and listening to their work. These opportunities to step into the classroom and see learning in action are so valuable, and we really appreciate your engagement and support.

I'm also delighted to share that Year 4 have had a fantastic start to their swimming lessons. The children were absolutely brilliant during their first swimming lesson day, and they're already looking forward to this becoming a weekly event. It's brilliant to see them so enthusiastic about developing their water confidence and swimming skills – this is such an important part of their physical development and wellbeing.

On a different note, I'm thrilled to update you on the progress of our building work. We're delighted to say that we're now in the final stages, with just a few finishing touches needed before we can bring the field back into action. This has been an exciting project for our school, and we can't wait to see the transformation completed.

Our new gazebo is just awaiting a whiteboard and will then be ready to use in the summer months as an outdoor learning space. This is going to be a wonderful addition to our provision, offering pupils the chance to learn outside in a sheltered environment – something we're really looking forward to exploring. The turf is coming along nicely too and will be ready in a few weeks for our EYFS children to use. It's going to make such a difference to their outdoor play and learning opportunities, and we're excited about the possibilities this will bring.

These improvements to our physical spaces reflect our commitment to providing the very best environment for our pupils to learn, play, and thrive. We can't wait to see these areas in full use and to share the benefits with our school community.

Enjoy your weekend, and we look forward to seeing you all next week!

Vicky Burdett

Headteacher



Grow

Explore

Achieve

# Nursery Places

## Available from age 3 years

### September 2026

Telephone 01759 318386

[admin@mcps.org.uk](mailto:admin@mcps.org.uk)

[www.melbourneprimary.org.uk](http://www.melbourneprimary.org.uk)



**Wonder**  
Learning Partnership  
Educate | Empower | Engage | Enrich



## Midday Supervisory Assistant

7.5 hours per week, Mon-Fri

Term-time only

SCP3 £12.85 per hour

Closing Date: 29th April 2026

Apply: [www.wlp.education](http://www.wlp.education)



**Stamford Bridge**  
Primary School

[www.stamfordbridgeschool.co.uk](http://www.stamfordbridgeschool.co.uk)

Part of the Family:



**Wonder**  
Learning Partnership  
Educate | Empower | Engage | Enrich



# Clubs

Breakfast Club - 7.30-8.30am - £5

ASC - 3-4pm - £5

ASC - 4-5pm - £5

• Please book breakfast club and After School Club on ARBOR - if you have any issues with booking sessions, please contact the school office.

## Enrichment Clubs

There will be a small charge for sessions to cover staffing and resources to keep the clubs running.

## Reading at Home



Thank you to all of you who continue to engage with the digital reading log.

Your teachers should have now sent you a letter about the reading log. You will receive a link every Monday. Each child should aim to read and log 4 reading sessions a week.

Well done to those children who have achieved their target this week! We love seeing your reading progress.

## Reminder to Parents

Please can we ask that children do not bring popcorn to school as a snack or part of their pack up. This is due to new government guidance on choking.



**Cygnets 87%**  
**Swan 92%**  
**Mallard: 93%**  
**Otter: 91%**  
**Dragonfly: 99%**  
**Heron: 94%**  
**Kingfisher: 93%**  
**Pheasant: 98%**

# Attendance and Awards!

The value award we are focusing on this week is the 'Grow' award. Well done to all the children who have been selected for this award!

**CYGNET AND SWAN CLASS** – Rosie for doing a fantastic job following our school rules and making great choices.

**MALLARD** – Bear, for his growth in school over the past weeks leading to fantastic progress!

**OTTER** –

Jaxon for showing renewed confidence in work and enjoyment of learning

**DRAGONFLY** – Archie for his imagination when writing his poem and taking inspiration from our model.

**HERON** – Orla, for her mature and confident attitude to all her learning tasks.

**KINGFISHER** – **Ronnie** – for always being respectful and kind, saying good morning and afternoon to teachers and making mature playground decisions.

**PHEASANT** – **Charlie NS** – for your growth in all areas of school life this year: work, attitude and confidence!

**Our WRITERS of the week are:**

**CYGNET AND SWAN CLASS** – Verity for your using your imagination very well when writing about the story of Hansel and Gretel. Sofia for your using your imagination very well when writing about the story of Hansel and Gretel.

**MALLARD** – Oliver, for challenging himself to create his own story and writing it beautifully!

**OTTER** – John Patrick and Reggie for their independent writing this week – clear, punctuated sentences!

**DRAGONFLY** – Ethan S for your continued improvement in writing lessons

**HERON** – Fredrick, for his impressive independence whilst improving sentences this week

**KINGFISHER** – Sophia – for settling back into Melbourne so well and impressing me her vocabulary choices and writing style.

**PHEASANT** – Charlie O – for your innovative poetic interview in our school news studio drama.

# Good time keeping means...

making sure your child is at school and ready to learn, before the school bell rings.



**Lost  
Minutes**



**Lost  
Learning**

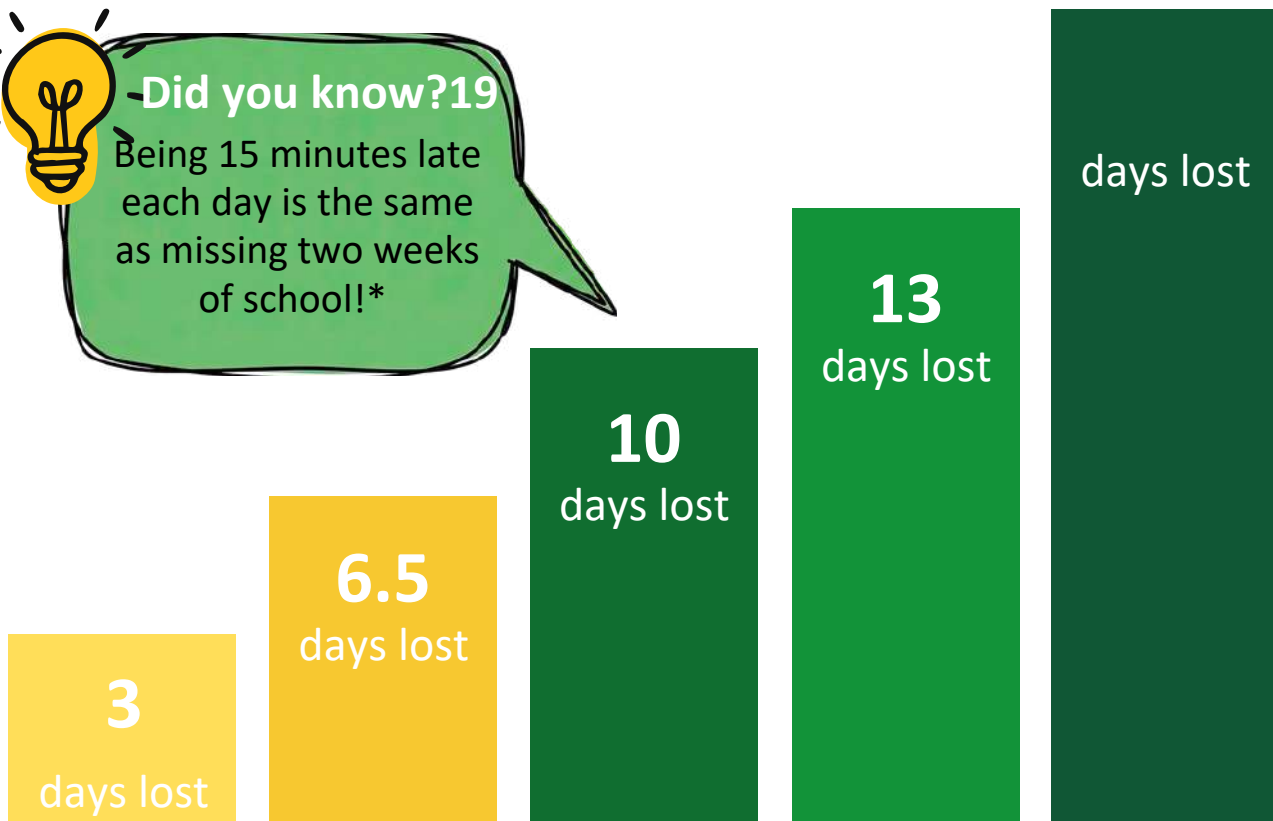


## Grow, Explore & Achieve Together



**Did you know? 19**

Being 15 minutes late each day is the same as missing two weeks of school!\*



**Every School Day Counts  
but every minute is important**

\*over one full academic year



**Melbourne**  
Primary School

[www.melbourneprimary.org.uk](http://www.melbourneprimary.org.uk)

Part of the Family:



**Wonder**  
Learning Partnership  
Educate | Empower | Engage | Enrich

# Dates for your diary

***Spring Term 2 2026 (Monday 23rd February 2026 – Friday 27th March 2026)***

**Year 4 Swimming Friday 17<sup>th</sup> April - 26<sup>th</sup> June**

**Bag2School 7<sup>th</sup> May**

***Summer Term 1 2026 (Monday 13th April 2026 – Thursday 21st May 2026)***

**Friday 22nd May 2026 - Staff Training Day (school closed)**

**Wednesday 17<sup>th</sup> June, Thursday 18<sup>th</sup> June,  
Friday 19<sup>th</sup> June and Monday 22<sup>nd</sup> June  
Year 5 Bike ability**

**Monday 22<sup>nd</sup> June - Wednesday 24<sup>th</sup> Year 6 Residential**

**School Disco 15<sup>th</sup> July**

***Summer Term 2 2026 (Monday 1st June 2026 – Friday 17th July 2026)***

**Monday 20th July 2026 - Staff Training Day (school closed)**

**Autumn Term 1 Monday 7<sup>th</sup> September - Friday 23<sup>rd</sup> October**

**Autumn Term 2 2nd November - Friday 18<sup>th</sup> December**



**FREE** online talk by  
Jane Keyworth

FACE family Advice Lead Facilitator

# Decreasing Depression

23rd April 7-8pm



Book online

[www.facefamilyadvice.co.uk](http://www.facefamilyadvice.co.uk)

Parents - Live Talks page

# Sparks LEARNING FESTIVAL



A free SEND event designed to support parents,  
carers, and young people navigating learning  
differences in Hull and East Yorkshire.  
SATURDAY, APRIL 26, 2025  
THE EDGE HUB, HULL 12-3PM

## FIND THE RIGHT SUPPORT FOR YOUR FAMILY

Drop in and meet the experts, discover resources, and connect with local charities - all in a welcoming and inclusive space.



**BOOK YOUR FREE TICKETS**

Please book a ticket for every person attending

[tickettailor.com/events/dyslexiasparks](https://tickettailor.com/events/dyslexiasparks)

DYSLEXIA  SPARKS



Save the environment whilst saving money and supporting Friends of Melbourne School.



Friends of Melbourne School now has an on-line second hand school uniform shop on the platform Uniformd. Please head along and have a look.

It's easy to see what we have in stock, and simple to place an order. Most of the items are listed with a zero price tag, so you are free to make a donation to Friends of School and receive the items of school uniform in return. Garments will be sent home from school with your child within seven days of you placing the order.

We have to pay an admin charge per transaction for us to use the platform, so we kindly ask that you make a minimum donation of £2 per item, and if possible, purchase more than one item at a time. If you are a uk tax payer, please tick the relevant box on the order form, and we will be able to claim gift aid on your donation.

Our stock list will be updated regularly, so if you don't see what you are looking for, please look again in a few days, or send us an enquiry using the "contact us" button on our page on the website.

Please pop along and have a look:

<https://app.uniformd.co.uk/items/melbourne-primary-school>



# BAG 2 SCHOOL

## FREE FUNDRAISING FOR SCHOOLS

In partnership with your school or organisation



www.bag2school.com

### Melbourne Primary School



Bag 2 School is a company that specialises in the reuse and recycling of good quality second-hand clothing and we have arranged to make a collection from your school. All the bags will be weighed and you will be paid for the total weight collected. Remember, the more you collect the greater the benefit to your school.



PLEASE USE YOUR OWN BAGS (THERE IS NO LIMIT).

When the clothes have been removed from the bag the plastic will be packed and sent for recycling.

**We are collecting good quality items for RE-USE:**

Men's, ladies' & children's clothing, paired shoes, handbags, belts & accessories.

(No uniforms, workwear, pillows, duvets or pieces of fabric please)

***The more we weigh the more we pay!***

***Extra bags are welcome - there's no limit***

***Please return your Bag 2 School on:***

Thursday 7 May 2026 by 9:00am



01609 780 222



www.bag2school.com



helpdesk@bag2school.com



**Wonder**  
Learning Partnership  
Educate | Empower | Engage | Enrich

# One Family

**We are part of a wider family of schools in the Wonder Learning Partnership. The Trust is passionate about working in partnership to provide the best education for our children along with ensuring colleagues are supported in career development.**

Our Trust is child centered, driven by an absolute desire, to know and care for each child as an individual. To nurture their individual talents and to create within them a love of learning. Exposing them to the true majesty, awe and wonder of creation. We take pride in:

- Recognising locality, rurality, community.
- Respecting the foundation, history and identity of each school.
- Ensuring every child can attend an exceptional local school.
- Providing every school who shares our mission a choice and home.
- Serving the greater good, the needs of others and our vocation as Servant Leaders.
- Being an advocate for those who we serve.

Learn more about our Trust: [www.wlp.education](http://www.wlp.education)

## Educate

We are committed to educating the whole child and believe every child should reach their potential.



## Empower

We will empower our whole school community through support, development and value in the pursuit of excellence.



## Engage

We will engage in best practice to develop the personal qualities and aspirations of pupils and staff.



## Enrich

We will ensure our children are exposed to a wealth of experiences and opportunities.

