


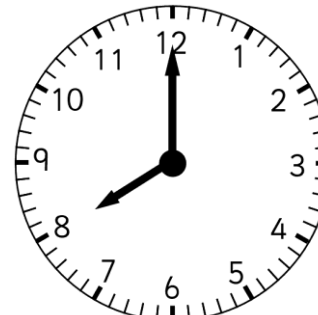


Please help me to complete these sentences using 'earlier' or 'later' and then work out the last two questions.

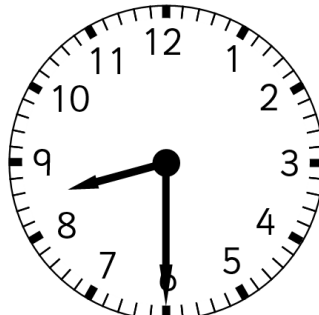
Tom went to bed at



Alex went to bed at



Lucy went to bed at



Alex went to bed than Lucy.

Lucy went to bed than Tom.

Tom went to bed than Alex.



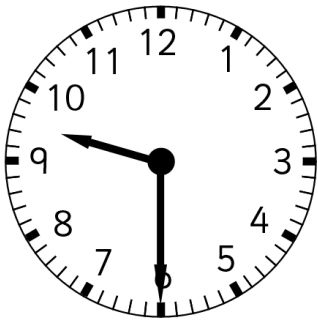
..... went to bed the earliest.

..... went to bed the latest.

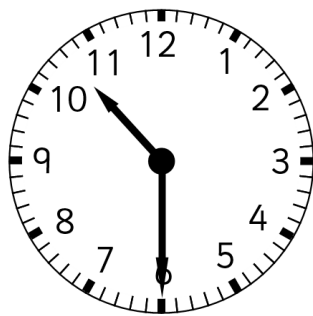


Please help me to complete these sentences using 'earlier' or 'later' and then work out the last two questions.

Gabi went to the park at



Alice went to the park at



Rick went to the park at



Gabi went to the park than Rick.

Alice went to the park than Gabi.

Rick went to the park than Alice.



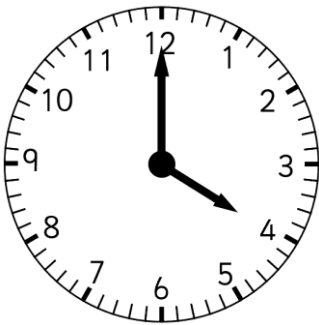
..... went to the park the earliest.

..... went to the park the latest.



Please help me to complete these sentences using 'earlier' or 'later' and then work out the last two questions.

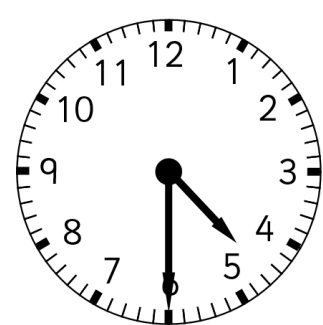
Zeb got home from school at



Beth got home from school at



Rory got home from school at



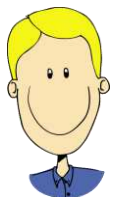
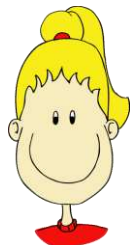
Rory got home from school than Beth.

Beth got home from school than Zeb.

Zeb got home from school than Rory.

..... got home from school the earliest.

..... got home from school the latest.



Answers:

Page 1

Alex went to bed earlier than Lucy.

Lucy went to bed later than Tom.

Tom went to bed earlier than Alex.

Tom went to bed the earliest.

Lucy went to bed the latest.

Page 2

Gabi went to the park earlier than Rick.

Alice went to the park later than Gabi.

Rick went to the park earlier than Alice.

Gabi went to the park the earliest.

Alice went to the park the latest.

Page 3

Rory got home from school later than Beth.

Beth got home from school earlier than Zeb.

Zeb got home from school earlier than Rory.

Beth got home from school the earliest.

Rory got home from school the latest.

.