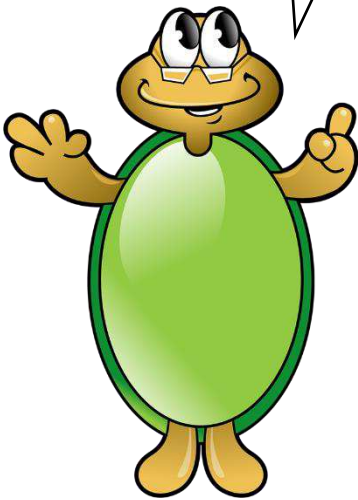


Fill in the missing months of the year.



- January
- February
- March
- April
- May
- June
- July
- August
- September
- October
- November
- December

January

April

May

July

October



Now please fill in the missing months in these sentences.

1. The month after February is

2. The month before August is

3. The month between  
September and November is

4. The months that begin  
with J are



Here are some more sentences with missing months of the year.

1. The month between March and May is

2. The month before December is

3. The month after January is

4. The months that begin with A are



Answers:

Page 1

The months of the year should be in the following order: January, February, March, April, May, June, July, August, September, October, November, December.

Page 2

1. The month after February is March.
2. The month before August is July.
3. The month between September and November is October.
4. The months that begin with J are January, June and July.

Page 3

1. The month between March and May is April.
2. The month before December is November.
3. The month after January is February.
4. The months that begin with A are April and August.